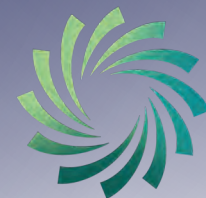


EDUCATION & TRAINING BOARDS AT A GLANCE



etbi
Education and Training
Boards Ireland
*Boird Oideachais agus
Oiliúna Éireann*

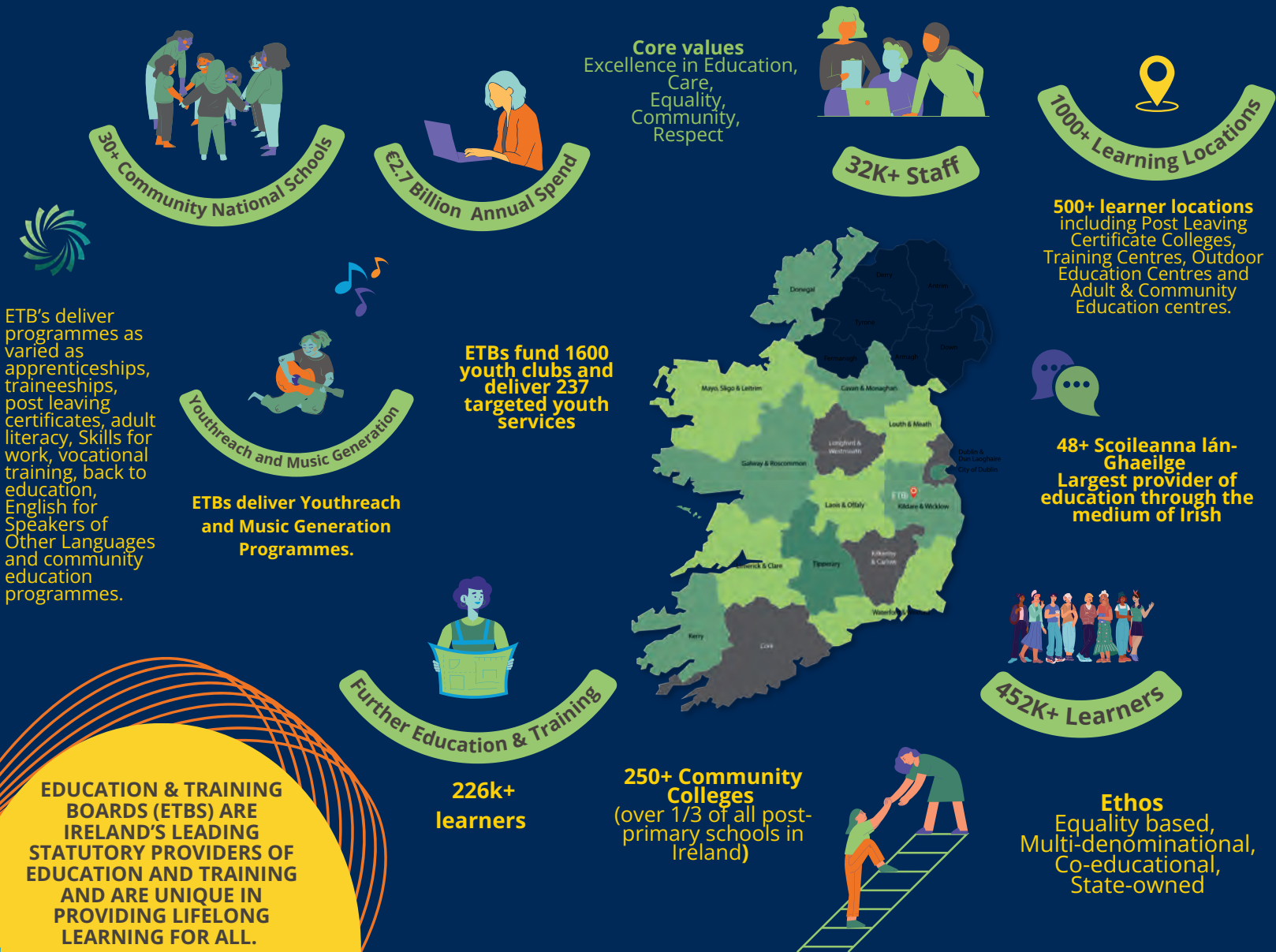
About Education & Training Boards Ireland (ETBI)

Education & Training Boards Ireland (ETBI) is the national representative association for our sixteen member Education & Training Boards (ETBs) and negotiates on behalf of the ETB sector at various forums within the education sector and at national, European, and overseas level. Our mission is to lead and advance the continued development of education, training and youthwork in Ireland and our vision is to harness our strength to influence and promote a strong education and training sector through collaboration and collective effort. ETBI is guided by the core values of excellence, care, equality, community, and respect.

Collectively, the sixteen Education and Training Boards have responsibility for 30+ Community National Schools and 250+ Post-Primary Schools with over 130,000 students. ETB Post-Primary Schools are the largest provider of education through the medium of Irish with 48+ schools. ETBs are also the largest provider of multid denominational education in Ireland. ETBs deliver Further Education and Training to over 226,000 FET learners each year across 500+ learner locations and play a central role in the delivery of apprenticeships and traineeships in partnership with employers. ETBs also support, monitor, and deliver youth services. The ETB Sector employs over 32,000 people and has a combined annual spend in excess of €2.7 billion.

EDUCATION & TRAINING BOARDS (ETBS) ARE IRELAND'S LEADING STATUTORY PROVIDERS OF EDUCATION AND TRAINING AND ARE UNIQUE IN PROVIDING LIFELONG LEARNING FOR ALL.

OUR SECTOR AT A GLANCE
#SupportYourLocalETB



ETB Public Affairs Priorities 2024-2025

Everyone deserves excellence in education and training:

Increase the number of **Community National Schools** so that all parents have access to multi-denominational primary schools in their communities for their children



Increase the number of **Deputy Principals in our disadvantaged schools** so that they can spend more time supporting students, their families and the broader education community to deliver better outcomes for our children.



Increase funding for **Further Education & Training** so that all learners can develop the skills they (and the country) need in their own communities



Invest in the **essential youth work services** ETBs provide to at-risk young people so they can flourish



#SupportYourLocalETB

More information: www.etbi.ie

INDEX



Cavan and Monaghan Education and Training Board	4
Cork Education and Training Board	5
City of Dublin Education and Training Board	5
Donegal Education and Training Board	6
Dublin and Dún Laoghaire Education and Training Board	6
Galway and Roscommon Education and Training Board	7
Kerry Education and Training Board	7
Kildare and Wicklow Education and Training Board	8
Kilkenny and Carlow Education and Training Board	8
Laois and Offaly Education and Training Board	9
Limerick and Clare Education and Training Board	9
Longford and Westmeath Education and Training Board	10
Louth and Meath Education and Training Board	10
Mayo, Sligo and Leitrim Education and Training Board	11
Tipperary Education and Training Board	11
Waterford and Wexford Education and Training Board	12

1. Cavan and Monaghan Education & Training Board

Profile of Services

Service	Figure
Post Primary Schools	11
Institutes of Further Education	18
Training	7
Youthreach Centres	6
PLC Colleges	2
Part-time/Night Classes	3



Services also include: Music Generation Programme, Prison Education Service, Outdoor Education and Training centre, Community & Youth Services, Vocational Training Opportunities Scheme (VTOS).

Services Delivery Statistics

Type	Participants
FET Participants	7,652
Second Level Participants	5,810
Population Circa	137,562
Training	1561
Part-time/Night Classes	1051
Annual Budget Circa	€106M
Staff	1,373



2. Cork Education and Training Board

Profile of Services

Service	Figure
Community National Schools	2
Community Special School	3
Post Primary Schools (including 4 Campuses of Further Education)	28
FET Campuses & Centres	11
Adult & Community Education Centres	25
Co-Trustee – Community & Comprehensive Schools	13
Outdoor Education Centres	2
Youthreach Centres	12



Services Delivery Statistics

Type	Participants
FET Learners	21,399
Post Primary Learners	14,226
Primary Learners	685
Annual Budget Circa	€249M
Staff	3,800



Services also include: Prison Education, Music Education & Creche services

3. City of Dublin Education and Training Board

Profile of Services

Service	Figure
Schools & Colleges	27
Youthreach Centres	9
Training Centres	2
Adult Education Services (areas)	5
Education Service - Prisons	7



Services Delivery Statistics

Type	Participants
Second Level Schools & Colleges	3,665
Post Leaving Cert	6,634
Other Learners	44,000+
Apprenticeships and Traineeships	2,874
Youthreach Programme	984
Adult, Community, and Other Education	20,053
Education Service to Prisons	12,680
Annual Budget Circa	€580M
Staff	3,200



4. Donegal Education and Training Board

Profile of Services

Service	Figure
Post Primary Schools (Including 4 Gaeltacht Schools & 2 Gaelcholáistí)	15
Further Education and Training Centres	18
Youthreach	4
PLC Centres	3
Donegal Music Education Partnership (DMEP)	10
OETC	1



Services Delivery Statistics

Type	Participants
Students	5,614
Learners Circa	10,707
Budget Circa	€111M
Staff	1,502



Services also include: Youth Services, Drug/Alcohol Education, REALT Service, Music Education Partnership.

5. Dublin and Dún Laoghaire Education & Training Board

Profile of Services

Service	Figure
Primary Schools	9
Special Schools	3
Second Level	31
Further Ed & Training	40
Self- Financed Adult Education Classes	7
Youth & Sports Development facilities	486
National Rehabilitation Hospital School	1



Services Delivery Statistics

Type	Participants
FET Participants	38, 842
Post Primary Participants	22,445
CNS (Including Community Special Schools)	3,337
Youth & Sports Facilities	272,128
Population Circa	865,000
Budget Circa	285M
Staff	4500



6. Galway and Roscommon Education & Training Board

Profile of Services

Service	Figure
Community National Schools	2
Community Comprehensive Schools	8
Post Primary	19
Further Ed Colleges	40



Services Delivery Statistics

Type	Participants
FET Participants	21,833
Post Primary Participants	7,419
CNS (Including Community Special Schools)	147
Music Generation	12,257
Youth Services	12,219
Population Circa	347,996
Budget Circa	150m
Staff	2000



Services also include: Literacy and Outdoor Education & Training, Local Creative Youth Partnership, Castlerea Prison Education Services, Ballaghaderreen Education Centre for Refugees



7. Kerry Education and Training Board

Profile of Services

Service	Figure
Community National Schools	3
Post Primary Level	8
FET College of the Future	1
FET Centres	10
Youth Services	5
Sports Centre	1



Services Delivery Statistics

Type	Participants
FET Participants	14,000
Post Primary & Primary Participants	3,100
Music Generation Kerry	3,171
Local Creative Youth Partnership	518
Population Circa	155,258
Budget Circa	90m
Staff	1,260

Services also include: Music Generation, Youth Services & Regional Education and Language Team (REALT)



8. Kildare and Wicklow Education & Training Board

Profile of Services

Service	Figure
Community National Schools	3
Post Primary Schools	23
Further Education and Training Centres	25
PLC Colleges	2
FET Courses	1,000



Services Delivery Statistics

Type	Participants
FET Participants	14,000
Post Primary Participants	14,243
CNS	756
Learners	29,500
Population Circa	364,929
Budget Circa	€160M
Staff	2,200



Services also include: Music Generation & Outdoor training centre, Drugs and Alcohol Task Force Services, Prison education, and Youth Services.



9. Kilkenny and Carlow Education & Training Board

Profile of Services

Service	Figure
Schools	15
Second Level Schools	13
FET Programme	22
Youthreach	2
Adult Education	29
Annual Budget Circa	€89M
Staff	1,377



Services Delivery Statistics

Type	Participants
FET Participants	8,505
Post Primary Participants	5,263
Post Leaving Cert	942
Youthreach	50
Population Circa	156,000

10. Laois and Offaly Education & Training Board

Profile of Services

Service	Figure
Post Primary Schools	9
Community Schools (Joint Patron)	5
FET Centres	13
National Construction Trg Centre	1
NZEB (Near Zero Energy Build) & Retrofit - European centre of Excellence	1
Scaffolding Apprenticeship dedicated Centre	1
Learner Information Hub	2



Services Delivery Statistics

Type	Participants
FET Participants	14000
Post Primary Participants	4711
Population Circa	162,658
Budget Circa	€80m
Staff	1370

Services also include: Music Generation and Education Laois/Offaly, Youth Services, Prison Education Service



11. Limerick and Clare Education & Training Board

Profile of Services

Service	Figure
Post Primary	24
Education & CNS	28
FET Campuses	4
Music Programmes	2
Outdoor Education Centres	1
Prison Education Centre	1,681
FET Courses	



Services Delivery Statistics

Type	Participants
Learners	38,000
Post Primary	9,740
Population Circa	332,863
Budget Circa	€257M
Staff	2,500



12. Longford and Westmeath Education & Training Board

Profile of Services

Service	Figure
Post Primary	8
Junior Education Centre	1
Primary	1
Further Education	14
Night Courses	2
Youth Services	38
Music Generation	2



Services Delivery Statistics

Type	Participants
FET Participants	12,622
Post Primary Participants	3,577
Junior Education Centre	18
Primary Participants	293
Night Courses	192
Youth Services	4,500
Music Generation	10,138
Population Circa	142,972
Budget Circa	€100m
Staff	1,116



13. Louth and Meath Education & Training Board

Profile of Services

Service	Figure
Community National Schools	4
Community Special School	1
Community Schools (Joint Patron)	6
Second Level	18
Dedicated PLC College	2
Shared PLC Campus	1
Youthreach Centres	8
FET Centres/Campus	7
Advanced Manufacturing Training Centre of Excellence (AMTCE)	1
Centre for European Schooling	1
Training Centre	2
Special Needs Units	31



Services Delivery Statistics

Type	Participants
FET Beneficiaries	37,140
Post Primary Participants	13,740
CNS Participants	787
ATMCE	2,089
Population Circa	323,317
Budget Circa	€180m
Staff	2500



Services also include: Youth Services, Drug/Alcohol Education, REALT Service, Music Generation.

14. Mayo, Sligo and Leitrim Education & Training Board

Profile of Services

Service	Figure
Second Level Schools / Colleges	19
Music Generation	3
FET Centres	12
Youthreach Centres	5
Community Education Courses	393
FET Courses	1,673



Services Delivery Statistics



Type	Participants
Learners	16,724
Second Level	4,892
PLC	1,046
Population Circa	228,086
Apprenticeships	800
Traineeships	500
Adult Literacy/Numeracy/ICT Programme	2,494
Community Education	2,813
Youthreach	175
Staff	1,554
Annual Budget Circa	€116M



15. Tipperary Education and Training Board

Profile of Services

Service	Figure
Post Primary Schools	10
High Support School	1
Centres	19
CNS	1
Special School	1
Further Education and Training (including PLC)	22



Services Delivery Statistics

Type	Participants
FET Participants (Including PLC)	11,182
Learners	16,634
CNS	182
Post Primary	5,253
Youth Services	1,680
Annual Budget Circa	€87M

Services also include: Music Generation & Youth Services

16. Waterford and Wexford Education & Training Board

Profile of Services

Service

FET Participants
Post Primary Participants (incl PLC)
CNS
Budget Circa
Staff

Participants

27,356
6,889
40
€147m
1,850



Services Delivery Statistics

Type

Community National Schools
Community Schools
Special School
Post Primary & PLC Ed
FET Centres
FET College
Outdoor Education & Training
Centre
Youthreach

Figure

1
3
1
13
29
1
1
8



Abbreviations

FET: Further Education & Training

OETC: Outdoor Education Training Centre

PLC: Post Leaving Certificate

CNS: Community National School



www.etbi.ie



@etbi_ireland



@Education & Training Boards Ireland



@ETBIreland



@Education and Training Boards Ireland

Piper's Hill, Kilcullen Road Naas,
Co Kildare
W91K729

Registered Charity Number (RCN) 20206586