

# EDUCATION & TRAINING BOARDS AT A GLANCE

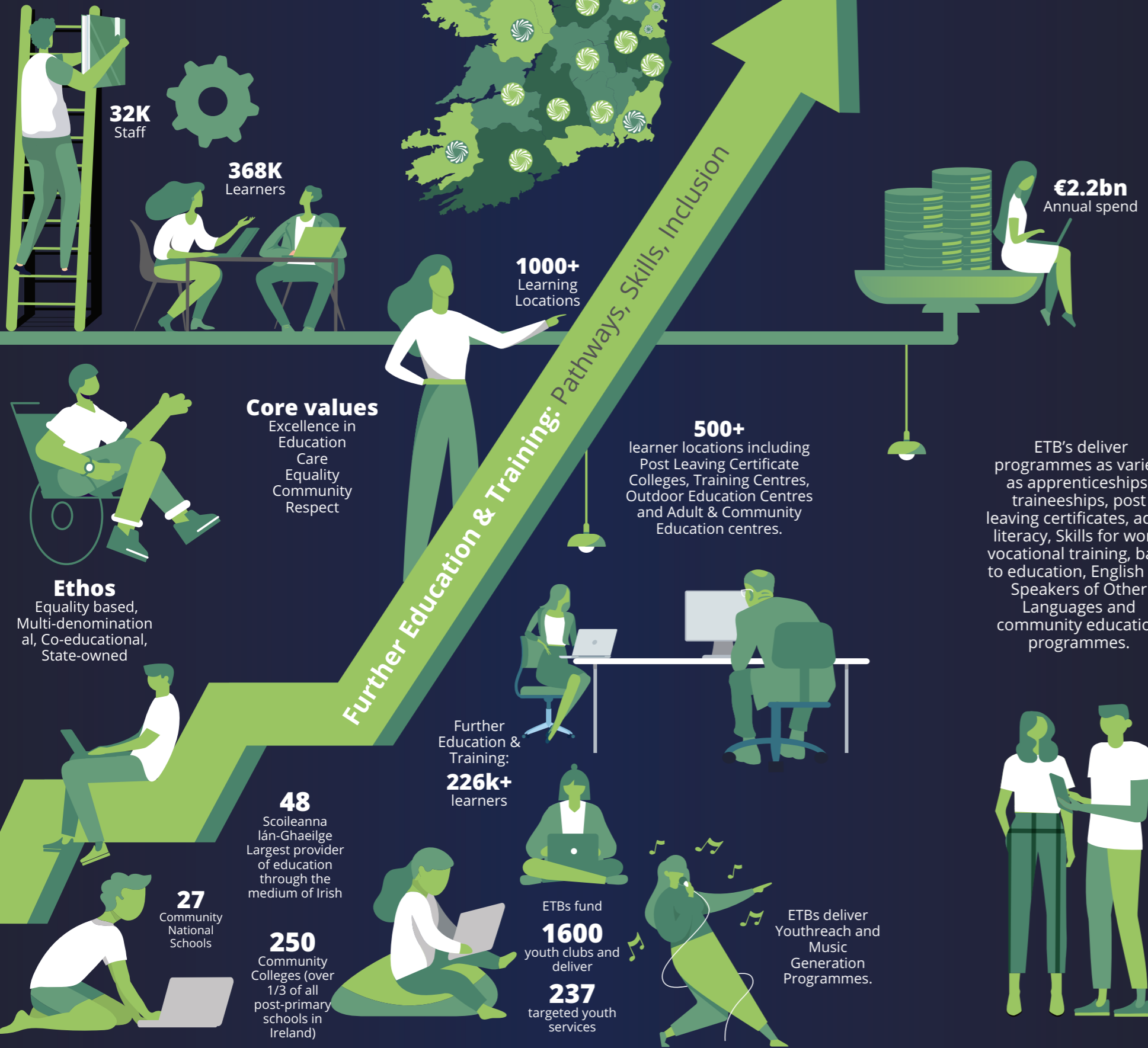


**etbi**  
Education and Training  
Boards Ireland  
*Boird Oideachais agus  
Oiliúna Éireann*



# OUR SECTOR AT A GLANCE

#ETBStrongerTogether



## LEARNERS IN ALL THEIR DIVERSITY ARE AT THE CENTRE OF EVERYTHING WE DO

### Introduction

Education & Training Boards Ireland (ETBI) is the national representative association for our sixteen member Education & Training Boards (ETBs) and negotiates on behalf of the ETB sector at various forums within the education sector and at national, European, and overseas level. Our mission is to lead and advance the continued development of education, training and youthwork in Ireland and our vision is to harness our strength to influence and promote a strong education and training sector through collaboration and collective effort. ETBI is guided by the core values of excellence, care, equality, community, and respect.

Collectively, the sixteen Education and Training Boards have responsibility for 27 Community National Schools and 250 Post-Primary Schools with over 117,000 students. ETB Post-Primary Schools are the largest provider of education through the medium of Irish with 48 schools. ETBs are also the largest provider of multi-denominational education in Ireland. ETBs deliver Further Education and Training to over 226,000 FET learners each year across 500+ learner locations and play a central role in the delivery of apprenticeships and traineeships in partnership with employers. ETBs also support, monitor, and deliver youth services. The ETB Sector employs over 32,000 people and has a combined annual spend in excess of €2bn.



**EDUCATION & TRAINING BOARDS (ETBS) ARE IRELAND'S LEADING STATUTORY PROVIDERS OF EDUCATION AND TRAINING AND ARE UNIQUE IN PROVIDING LIFELONG LEARNING FOR ALL.**

## STRATEGIC GOALS 2022-2024

### People

Promote excellence in education and training and invest in staff development for learner outcomes

### Partnership

Harness ETB collective strength and invest in our partnerships at national and EU level

### Potential

Lead strategic growth of sector and promote the ETB sector and the services it provides to learners

Cavan and Monaghan Education and Training Board	5
Cork Education and Training Board	6
City of Dublin Education and Training Board	7
Donegal Education and Training Board	8
Dublin and Dún Laoghaire Education and Training Board	9
Galway and Roscommon Education and Training Board	10
Kerry Education and Training Board	11
Kildare and Wicklow Education and Training Board	12

Kilkenny and Carlow Education and Training Board	13
Laois and Offaly Education and Training Board	14
Limerick and Clare Education and Training Board	15
Longford and Westmeath Education and Training Board	16
Louth and Meath Education and Training Board	17
Mayo, Sligo and Leitrim Education and Training Board	18
Tipperary Education and Training Board	19
Waterford and Wexford Education and Training Board	20



# Cavan and Monaghan Education and Training Board



## Profile of Services

Service	Figure
Post Primary Schools	11
Institutes of Further Education	18
Training	7
Youthreach Centres	6
PLC Colleges	2
Part-time/Night Classes	3



CAVAN AND MONAGHAN ETB

**Services Also include:** Music Generation Programme, Prison Education Service, Outdoor Education and Training centre, Community & Youth Services

## Services Delivery statistics

Type	Participants
FET Participants	5,403
Second Level Participants	5,380
Population Circa	137,562
Training & Part-time/Night Classes	1251
Annual Budget Circa	€87M
Staff	1,373





## Profile of Services

Service	Figure
Community National Schools	2
Community National Special School	1
Post Primary colleges (Including 4 Colleges of Further Education)	28
FET Colleges & Centres	11
Adult Community education Centres	25
Co-Patron – Community Schools	12
Outdoor Education Centres	2
Youthreach centres	12



## Profile of Services

Service	Figure
Schools & Colleges	24
Youthreach Centres	9
Training Centres	32
Adult Education Services (areas)	5
Education Service - Prisons	7



## Services also include:

Prison Education and Music Education

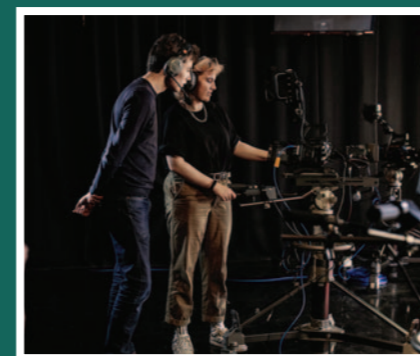
## Services Delivery statistics

Type	Participants
FET Participants	13,127
Post Primary Participants	12,269
CNS	395
Annual Budget Circa	€225M
Staff	3,500



## Services Delivery statistics

Type	Participants
Second Level Schools & Colleges	3,396
Post Leaving Cert	6,253
Other Learners	30,000
Adult Literacy Groups	3,710
Apprenticeship Training	1,315
Community Education / Training Centres	5,753
Youthreach	696
Population Circa	750,000
Education Service - Prisons	7,122
Budget Circa	€599M
Staff	3,200



# Donegal Education and Training Board

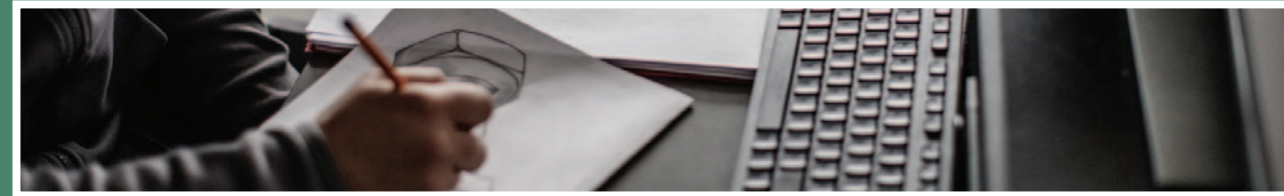


# Dublin and Dún Laoghaire Education and Training Board



## Profile of Services

Service	Figure
Post Primary Schools (Including 4 Gaeltacht Schools & 2 Gaelcholáistí)	15
Further Education and Training Centres	18
Youthreach	4
PLC Centres	3
Donegal Music Education Partnership (DMEP)	10
OETC	1



## Profile of Services

Service	Figure
Community National Schools	12
Second Level	31
Further Ed Colleges	11
Adult Education Services	11
Training Centres	3
Youthreach	11
Primary (Incl 3 special schools)	3
Youth & Sports Development facilities	486



## Services also include:

Youth Services & Drug/Alcohol Education

## Services Delivery statistics

Type	Participants
Students	4,929
Learners	10,022
Budget Circa	€94M
Staff	1431



## Services Delivery statistics

Type	Participants
FET Participants	26,425
Post Primary Participants	21,076
CNS (Including Community Special Schools)	3364
Youth & Sports Facilities	272,128
Population Circa	750,000
Budget Circa	240M
Staff	4100









# Kildare and Wicklow Education and Training Board



# Kilkenny and Carlow Education and Training Board



## Profile of Services

Service	Figure
Community National Schools	3
Post Primary Schools	23
Further Education and Training Centres	25
PLC Colleges	3
FET Courses	1,000

## Services also include:

Music Generation & Outdoor training centre, Prison education and Youth Services



## Profile of Services

Service	Figure
Schools	15
Second Level Schools	13
FET Programme	22
Youthreach	2
Adult Education	29
Annual Budget Circa	€80M
Staff	1,377



## Services Delivery statistics

Type	Participants
FET Participants	13,502
Post Primary Participants	12,820
CNS	557
Learners	25,000
Population Circa	364,929
Budget Circa	€154M
Staff	2,600



## Services Delivery statistics

Type	Participants
FET Participants (Including Full Time & Part Time)	8,805
Post Primary Participants	4,929
Post Leaving Cert	903
Youthreach	50
Population Circa	156,000





# Laois and Offaly Education and Training Board



# Limerick and Clare Education and Training Board



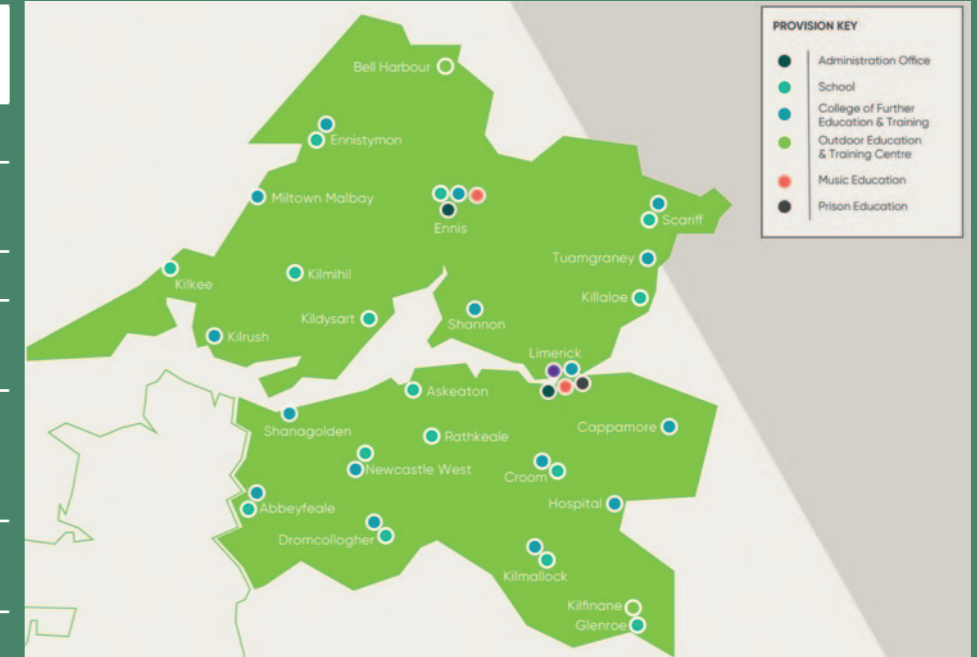
## Profile of Services

Service	Figure
Post Primary Schools	9
Community Schools (Joint Patron)	5
FET Centres	13
National Construction Trg Centre	1
NZEB (Near Zero Energy Build) & Retrofit - European centre of excellence	1
Scaffolding Apprenticeship dedicated centre	1
Learner Information Hub	2



## Profile of Services

Service	Figure
Post Primary Education & CNS	24
FET Campuses	28
Music Programmes	4
Outdoor Education Centres	2
Prison Education Centre	1
FET Courses	1,681



LAOIS AND OFFALY ETB

LIMERICK AND CLARE ETB

## Services also include:

- Music Generation and education Laois/Offaly
- Youth Services
- Prison Education Service

## Services Delivery statistics

Type	Participants
FET Participants	14000
Post Primary Participants	4711
Population Circa	162,658
Budget Circa	80m
Staff	1200



## Services Delivery statistics

Type	Participants
Learners	38,000
Post Primary	9,590
Population Circa	313,802
Budget Circa	€173M
Staff	2,500





# Longford and Westmeath Education and Training Board



# Louth and Meath Education and Training Board

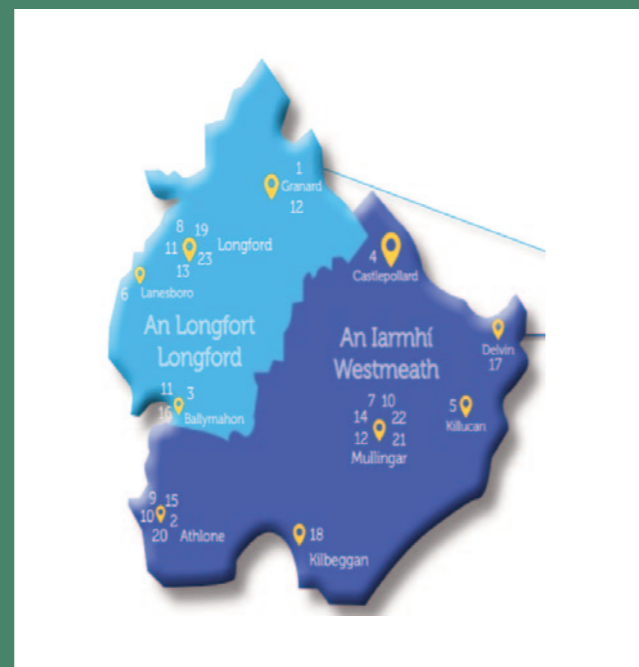


## Profile of Services

Service	Figure
Post Primary	9
Further Ed Colleges	11
Youth Services	35
Night Courses	1
Youthreach Centre	4
VTOS	2

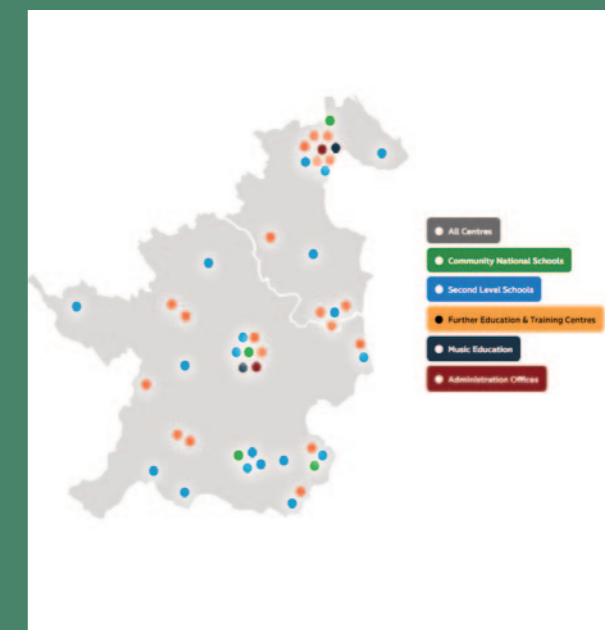
## Services also include:

Music Generation



## Profile of Services

Community National Schools	4
Community Schools (Joint Patron)	6
Second Level	18
Dedicated PLC College	2
Youthreach Centres	8
FET Centres/Campus	7
AMTCE	1
Centre for European Schooling	1
Training Centre	1
Special Needs Units	22



## Services Delivery statistics

Type	Participants
FET Participants	9229
Post Primary Participants	3319
Night Courses	96
Youth Services	3828
Population Circa	129,643
Budget Circa	60m
Staff	1000



## Services Delivery statistics

Type	Participants
FET Participants	22,564
Post Primary Participants	13,000
ATMCE	237
Population Circa	323,317
Budget	180m
Staff	2500



# Mayo, Sligo and Leitrim Education and Training Board

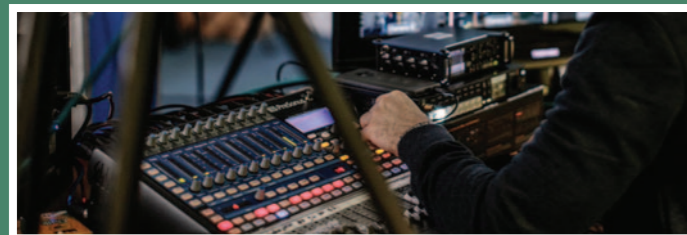


# Tipperary Education and Training Board



## Profile of Services

Second Level Schools / Colleges	19
Adult Literacy	258
Music Generation	3
FET Centres	12
Youthreach Centres	5
Community Education	466
FET Courses	1,673



## Profile of Services

Post Primary Schools	10
High Support School	1
Centres	19
CNS	1
Special School	1
Further Education and Training (including PLC)	22

Services Also include:  
Music Generation & Youth Services



In addition to the main centres of Further Education and Training shown on this map, FET is delivered in thirty-four locations in the county overall.

## Services Delivery statistics

Type	Participants
Learners	30,000
Second Level	4,534
PLC	891
Population Circa	228,086
Apprenticeships	650
Traineeships	400
Adult Literacy/Numeracy/ICT Programme	1,525
Community Education	3,381
Youthreach	175
Annual Budget Circa	€108M



## Services Delivery statistics

Type	Participants
FET Participants (Including PLC)	10,248
Learners	11,000
CNS	160
Post Primary	5,012
Youth Services	1,680
Annual Budget Circa	€74M



MAYO, SLIGO AND LEITRIM ETB

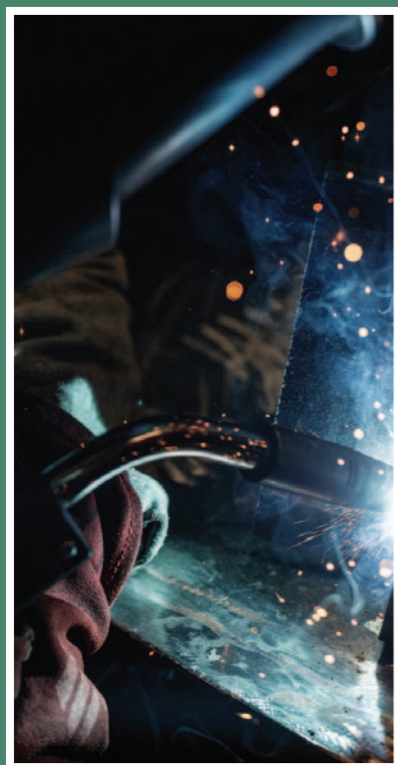
TIPPERARY ETB



# Waterford and Wexford Education and Training Board



WATERFORD AND WEXFORD ETB



- FET: Further Education & Training
- OETC: Outdoor Education Training Centre
- PLC: Post Leaving Certificate
- CNS: Community National School

## Services Delivery statistics

Type	Participants
FET Participants	14510
Post Primary Participants (incl PLC)	6402
CNS	33
Budget Circa	130m
Staff	1700

## Profile of Services

Community National Schools	1
Community Schools	3
Post Primary & PLC Ed	13
FET Centres	17
FET College	1
Outdoor Education & Training Centre	1
Youthreach	7



## Abbreviations





Join us in celebrating the 10th anniversary of the establishment of Education & Training Boards on

## ETB Day

2nd March 2023

Further details via our social media channels and [www.etbi.ie](http://www.etbi.ie)







**etbi**

Education and Training  
Boards Ireland

*Boird Oideachais agus  
Oiliúna Éireann*

Piper's Hill, Kilcullen Road  
Naas, Co Kildare  
W91K729

[www.etbi.ie](http://www.etbi.ie)

 @etbi\_ireland

 @Education & Training Boards Ireland

 @ETBIreland

 @Education and Training Boards Ireland

Registered Charity Number (RCN): 20021092