

National Centre for Guidance in Education

Webinar Presentation and Discussion for Whole School Guidance during the Covid19 Pandemic:
Focusing on 6th year students
6th May, 2020.



Lárionad Náisiúnta *um* Threoir *san* Oideachas
National Centre *for* Guidance *in* Education



An Roinn Oideachais
agus Scileanna
Department of
Education and Skills

Purpose of this webinar:



Part 1:

To discuss Guidance for the current 6th year cohort – focusing on careers and education classes, group work and one-to-one sessions.

Part 2:

To provide an update on developments in Guidance.

Part 3:

To facilitate a Q and A session in relation to Guidance in post primary schools at the current time.

The role of NCGE:

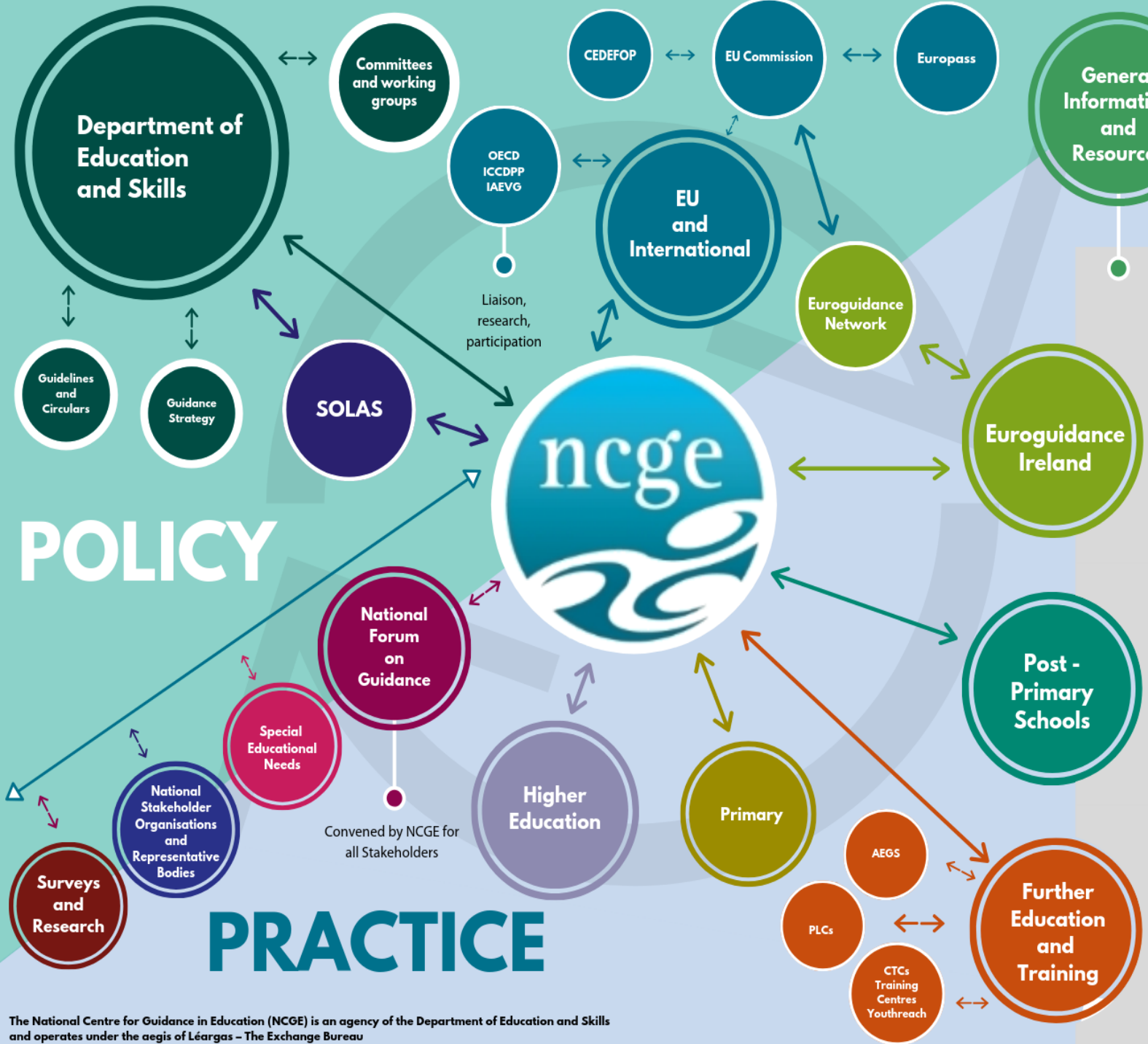


An Roinn Oideachais
agus Scileanna
Department of
Education and Skills

**NCGE is an agency of the
Department of Education and Skills (DES)**

Our role:

Develop, support and influence quality guidance provision in post-primary schools and further education and training settings as part of lifelong learning, in accordance with national and international best practice.



POLICY

PRACTICE

Websites

- ncge.ie
- euroguidance.ie
- vle.ncge.ie

CPD

- Face to Face
- School Guidance Handbook
- FET Guidance Handbook
- Webinars

Promulgation

- 'NCGE Bulletin'
- 'Guidance Matters'
- Conferences and Exhibitions

Additional Resources

- Frameworks / Guidelines
- Research

The NCGE Guidance Counsellor team



Jennifer McKenzie,
Director.



Mary Stokes,
Guidance Programme
Coordinator (FET)



Carol Guildea,
Guidance Programme
Coordinator (Post Primary)



Orla Ní Cheallaigh,
Euroguidance
Officer

Guidance resources, publications and policies:



Continuity of Guidance (During Covid19 School Closures):

DES - 2020

[Continuity of Guidance Counselling - Guidelines for schools providing online support for students](#)

NCGE - 2020

[Support information for Guidance Counsellors in Schools \(*Covid-19 School Closures*\)](#)

Monaghan Education Centre (2020)

[Information notice for supervisors and Guidance Counsellors](#)

DES – 2020

[Supporting the Wellbeing of Students: Guidance for Post-Primary Schools and Student Support Teams during School Closures and Public Health Restrictions arising from COVID-19](#)

General Policy and Publications

[Government of Ireland – 1998 - The Education Act: Section 9c](#)

DES –2005

[Guidelines for Second Level Schools on the Implications of Section 9 \(c\) of the Education Act 1998, relating to students' access to appropriate guidance](#)

NCGE –2017

[Whole School Guidance Framework](#)

Part 1: Guidance for the current 6th year students

Where to start and how to continue...



Lárionad Náisiúnta *um* Threoir *san* Oideachas
National Centre *for* Guidance *in* Education



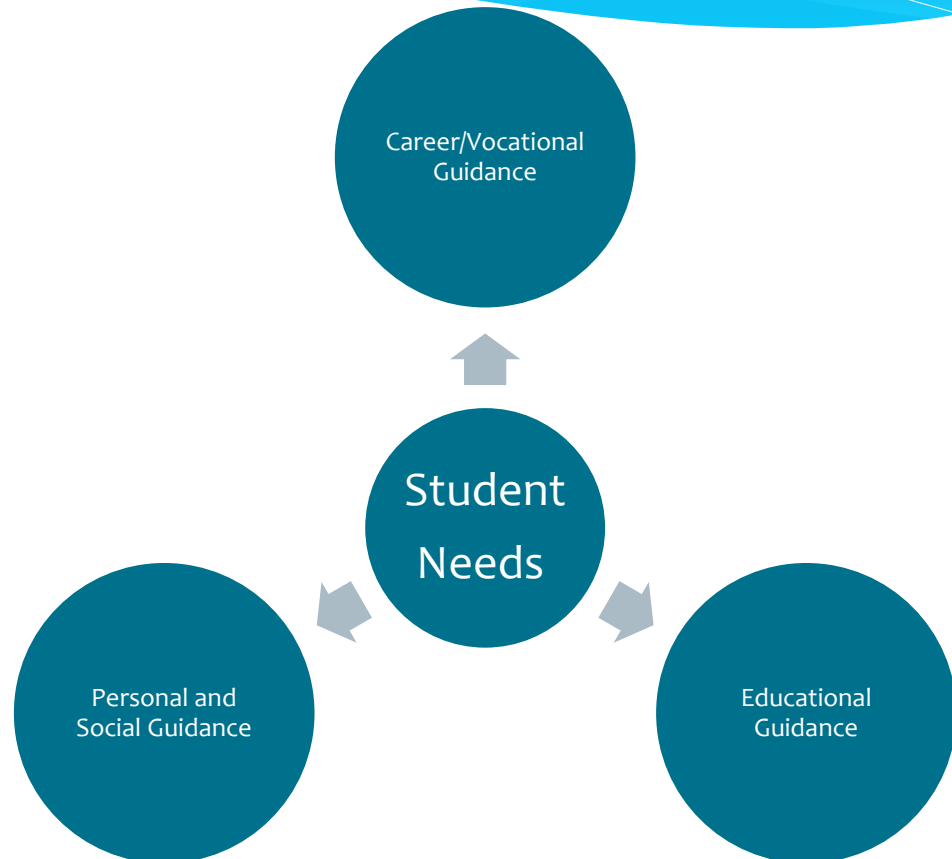
An Roinn Oideachais
agus Scileanna
Department of
Education and Skills

Guidance For Current 6th year students: Needs based approach

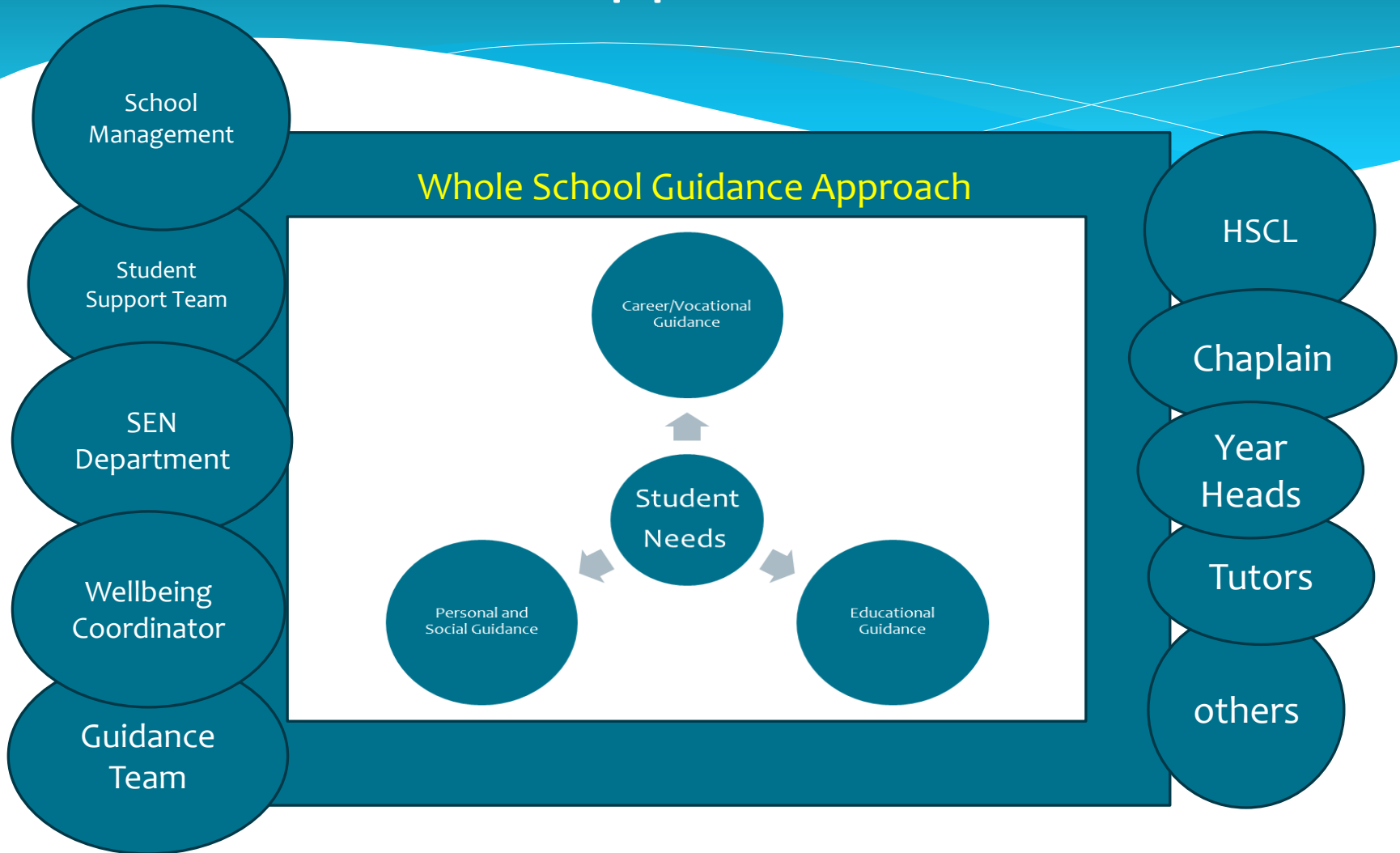
Focus on all three aspects of the Guidance role: Needs based approach.

Are the guidance needs of students in your school the same as before COVID 19?

How can you identify the current guidance needs?



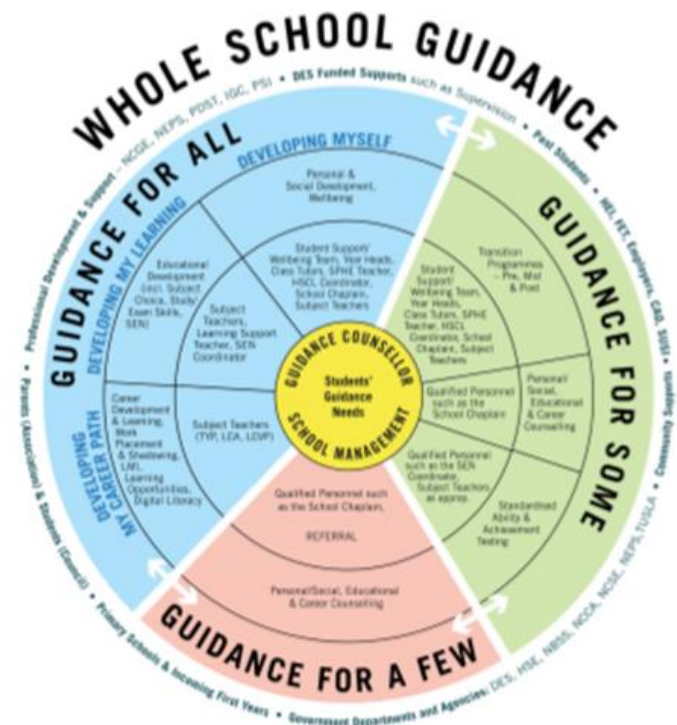
Meeting the needs of students: A Whole School Approach



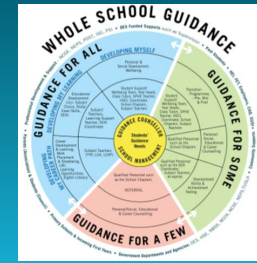
Communication, Organisation and Resource Management

For 6th year students:

1. Identify student guidance needs (incorporate student and parent voice)
2. Identify needs of **All / Some** and **Few**
3. Discuss with members of school community/ Student Support Team how best to meet the needs
4. Utilise school guidance website, social media, school online platform for general updates/ resources

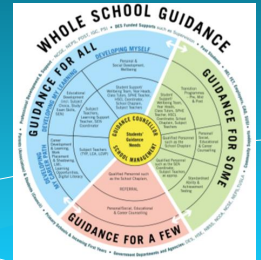


Prioritisation of Students: Points for the Whole School Student Support Team to consider



- How do we identify** the Guidance needs of students in our school?
- Do we have a **clear process of referral** for all **staff** members concerned about students? Can we use or adapt the existing referral process?
- Do we have a clear process of referral for **parents/guardians** concerned about students? Has this been communicated to parents/guardians?
- Do we have a clear process of **self-referral** for students themselves? How do we communicate this to them?
- Having identified the needs of students in our school, when / how often do the **Student Support Team meet online** to respond appropriately?
- Do we have some students that should be prioritised?
- Have we considered our **remote classroom practices – large or small groups**? What works best? What decisions have been made at a whole-school level regarding online teaching?
- Are we aware of **outside agencies** who can support student needs? Are we aware of the support that **NEPS** is providing?

Identifying the current vocational and educational guidance needs of students in your school



- What would **normally** be on the schedule for Guidance at the current time (class content / presentations / information evenings)?
- How can we best **continue** the Guidance programme online?
- Have we discussed adapting the Guidance Programme due to COVID19?
- What **resources** are required to address the emerging Guidance needs of students?
- How do we **reaffirm the value** of the Leaving Cert / LCA/ LCVP ?
- How do we **re-engage** students who are demotivated?
- What specific role does the Guidance Counsellor have as part of a Whole School Approach ?

Addressing and responding to the vocational and educational needs of students in your school – in class / group sessions

Potential Approaches:

- * **Continue** Guidance Classes in line with 'normal' school timetable
- * Prepare PowerPoints for students to access '**a la carte**' with a voiceover or video
- * Provide **worksheets and resources** to students in a developmental sequence to support their guidance related learning
- * Attend **online assemblies** with guidance updates and activities for the week ahead
- * A weekly guidance 'newsletter' on **school website** with relevant links
- * A virtual guidance clinic where students can '**drop in**' re: course queries/ reference requests / checking information updates
- * Register your school to **Euro-Quest** and invite 4th and 5th year students to complete from home
- * Support students in accessing **CareersPortal** (freely available to 6th yr. students at the current time)

Always follow agreed whole-school procedures approved by school management e.g. using an approved platform, approved apps, school emails and blocking personal mobile numbers

See link to **DES Continuity of Guidance Counselling Guidelines** below.

6th Year one-to-one sessions

- * Personal wellbeing?
- * Personal supports needed?
- * Family circumstances?
- * Study space / plans?
- * General worries / concerns?
- * Review their post-school plan?
- * CAO change of mind?
- * SUSI grant – application complete / new? Alert students to the change of circumstances facility
- * FET options – PLC / Apprenticeship/ Traineeship?
- * UCAS application
- * European/US applications?
- * HPAT? Change of results release date
- * New Application opportunities?
- * Preparing for online interviews?
- * Other?

Example A:

School A:

- 600 students

(including 100 6th years)

- Mixed student cohort

(academic ability and socioeconomic background)

- Student Support Team in School

(includes Deputy Principal / Guidance Counsellor / SEN Coordinator and member of teaching staff)

Proposed Actions:

- Student Support Team meet and plan approach.
- Guidance Counsellor creates short survey to ascertain needs of students in all areas of Guidance.
- Survey distributed online to students. Text to parents encouraging students to complete survey.
- Results of survey discussed with Student Support Team.
- Guidance needs of All / Some and Few identified.
- Student Support Team discuss how to meet the needs of All / Some and Few in line with resources
- Online guidance classes / presentations developed to meet the needs of students.
- One to one sessions with Guidance Counsellor online.
- Students referred to outside agencies as appropriate.
- Student support team meet regularly to discuss progress and emerging needs

Example B:

School B:

- **1000 students**

(180 6th years)

- **Large number of students already in touch with school**

highly concerned about Leaving Certificate.

- **180 6th Years- 30 students with SEN.**

- **High levels of anxiety amongst students**

reported by other teachers through previously identified processes of communication

- * **Care Team**

five members including two Guidance Counsellors

Points of Action:

- Care team meet and discuss needs of students as reported.
- SEN Coordinator phones homes of 30 students with SEN
- Guidance Counsellors call/email other 150 students (75 each)
- Guidance Counsellors liaise with SEN Coordinator and follow up with 30 SEN students.
- Online guidance classes / presentations developed to meet the needs of students.
- One to one sessions with Guidance Counsellor online.
- Students referred to outside agencies as appropriate.
- Care team meet regularly to discuss progress and emerging needs

Example C:

School C:

- 400 students
(60 x 6th years)
- Low rates of participation in online / virtual learning
- Students ill-equipped with IT in their homes
- Students at risk of not completing Leaving Certificate Assessment due to change of date

Points of Action:

- Plan with all SST and all staff members on how to engage 6th year students.
- Identify students who are engaging / wish to engage and support: discuss plan with all SST on how these students can be accommodated.
- School allocates 'teacher mentor' to each 6th year student. Teacher may contact students/parents on a very regular basis and set daily/ weekly targets for students
- Whole staff liaise with management and SST on what is working / where needs are
- SST students who need additional supports
- One-to-one guidance sessions scheduled with 6th years.
- Students referred to external agencies where appropriate

Part 2: Updates for Guidance Counsellors

NCGE updates and other information



Lárionad Náisiúnta *um* Threoir *san* Oideachas
National Centre *for* Guidance *in* Education



An Roinn Oideachais
agus Scileanna
Department of
Education and Skills

NCGE Updates / Next Steps



Resources:

- * School Guidance Handbook
<https://www.ncge.ie/school-guidance-handbook/>
- * Whole School Guidance Framework and Resources -
<https://www.ncge.ie/wsg/references>
- * Resource sharing facility
<https://www.ncge.ie/covid-19/support/post-primary/resources/sharing>
- * Confidentiality Policy
<https://www.ncge.ie/school-guidance-handbook/developing-confidentiality-policy-post-primary-schools>
- * Continuity of Guidance PowerPoint <https://www.ncge.ie/covid-19/support/post-primary/resources/slideshow>
- * Euro-Quest
<https://euroguidance.ie/euro-quest>
- * Additional Weekly webinars (Topics to be decided based on needs of Guidance Counsellors)
- * Information Updates
- * Resources Sharing
- * Welcome Feedback

Other Updates / Critical information



DES Guidelines:

<https://www.education.ie/en/Schools-Colleges/Information/Post-Primary-School-Policies/Policies/continuity-of-guidance-counselling-guidelines-for-schools-providing-online-support-for-students.pdf>

NEPS:

NEPS advice & resources for keeping children and young people well during Covid-19

<https://www.education.ie/en/Schools-Colleges/Services/National-Educational-Psychological-Service-NEPS-/covid-19.html>

DES:

Supporting the Wellbeing of Students: Guidance for Post-Primary Schools and Student Support Teams during School Closures and Public Health Restrictions arising from COVID-19

<https://www.education.ie/en/Schools-Colleges/Services/National-Educational-Psychological-Service-NEPS-/supporting-the-wellbeing-of-post-primary-students.pdf>

General NEPS resources & publications:

<https://www.education.ie/en/Schools-Colleges/Services/National-Educational-Psychological-Service-NEPS-/Resources-Publications.html>

DES Information for Leaving Certs 2020

<https://www.gov.ie/en/publication/2f07eb-leaving-cert-2020-information/>

DES information on Wellbeing for Leaving Certs 2020

<https://www.gov.ie/en/publication/256911-leaving-cert-2020-practical-supports>

Other Updates / Critical information



PDST: <https://www.pdst.ie/>

CAO: <https://www.cao.ie/index.php?page=faqcovid19>

SEC: <https://www.examinations.ie/>

PLC/Colleges of Further Education: <https://fetchcourses.ie>

Careers Portal: <https://careersportal.ie>

Professional Bodies: IGC <http://igc.ie/>

SUSI: <https://susi.ie/do-you-have-a-question-about-covid-19-and-student-grant-funding-check-out-our-covid-19-faq/>

Careers News - <https://careersnews.ie/>

Part 3: Q&A



Lárionad Náisiúnta *um* Threoir *san* Oideachas
National Centre *for* Guidance *in* Education



An Roinn Oideachais
agus Scileanna
Department of
Education and Skills



Lárionad Náisiúnta *um* Threoir *san* Oideachas

National Centre *for* Guidance *in* Education



An Roinn Oideachais
agus Scileanna
Department of
Education and Skills

THANK YOU

Webinar recording will be available at:
<https://www.ncge.ie/covid-19/support/post-primary/webinars>



www.ncge.ie



ncgeinfo@ncge.ie
carol.guildea@ncge.ie



[@ncgeguidance](https://twitter.com/ncgeguidance)